

# Anti-VEGFxPD1 hIgG1 Reference Antibody (Ivobio)

## Product Information

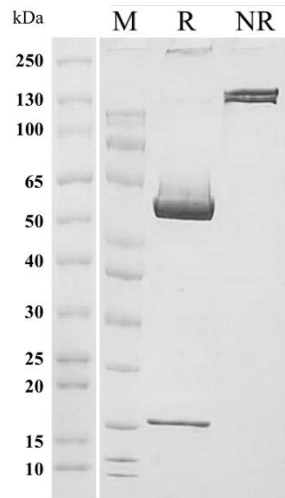
<b>Product Name</b>	Anti-VEGFxPD1 hIgG1 Reference Antibody (Ivobio)
<b>Storage temp.</b>	Store at 2-8°C short term (1-2 weeks).Store at ≤ -20°C long term. Avoid repeated freeze-thaw.
<b>Catalog# / Size</b>	<b>GM-87757MAB-1mg / 1 mg</b> <b>GM-87757MAB-5mg / 5 mg</b> <b>GM-87757MAB-25mg / 5 mg*5 vials</b> <b>GM-87757MAB-50mg / 50 mg</b> <b>GM-87757MAB-100mg / 50 mg*2 vials</b>

## Antibody Information

<b>Expression System</b>	CHO
<b>Aggregation</b>	< 5% as determined by SEC-HPLC
<b>Purity</b>	> 95% as determined by SDS-PAGE
<b>Endotoxin</b>	< 1 EU/mg, determined by LAL gel clotting assay
<b>Sterility</b>	0.2 µm Filtered
<b>Target</b>	VEGF&PD1
<b>Clone</b>	Ivonescimab
<b>Alternative Names</b>	VEGF: VPF; MVCD1; L-VEGF PD1: CD279
<b>Source/Isotype</b>	Monoclonal human IgG1(KDEL,L234A/L235A),Kappa
<b>Application</b>	Block assay; Bioactivity-ELISA
<b>Description</b>	PD-1/VEGF Bispecific Antibody is a novel cancer immunotherapy drug that can target both PD-1 and VEGF. It blocks the interaction between PD-1 and PD-L1/PD-L2. The bispecific antibody can specifically bind to VEGFA and PD-1, selectively relieve the immune suppression caused by VEGFA and PD-1 in the body, and inhibit tumor-induced angiogenesis.
<b>Formulation</b>	20 mM Histidine, 100 mM NaCl, pH 6.0

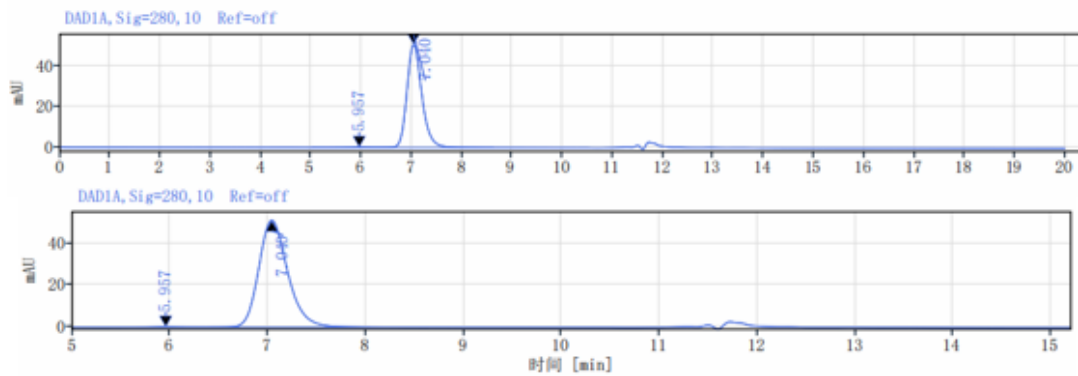
## Data Examples

### SDS-PAGE



On SDS-PAGE under reducing (R)/non-reducing(N-R) condition. The gel was stained overnight with Coomassie Blue. The purity of the protein is greater than 95%.

### SEC-HPLC



The purity of this product is more than 95% verified by SEC-HPLC

### Block assay

Anti-VEGF×PD1 hIgG1 Reference Antibody (Ivobio) (Catalog # GM-87757MAB) inhibits H\_VEGF Reporter 293 Cell Line (Catalog # GM-C09057) Luminescence induced by VEGF165. IC50 for this effect is 2.844 nM.

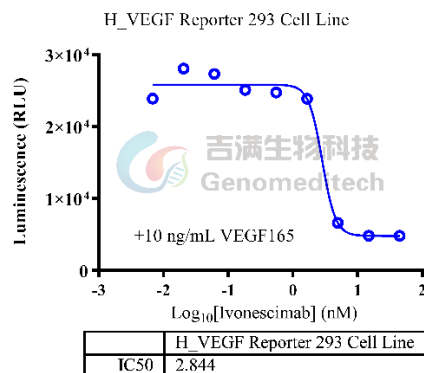


Fig. Assay

Version:3.3

Bioactivity-ELISA

Human PD1 Protein; His Tag (Catalog # GM- GM-87593RP) was immobilized at 1 µg/ml (100 µL/well) on streptavidin precoated. Increasing concentrations of Anti-VEGF×PD1 hIgG1 Reference Antibody (Ivobio) (Catalog # GM-87757MAB) were added.

**Bioactivity-ELISA**

0.1 µg Human PD1 Protein; His Tag of per well

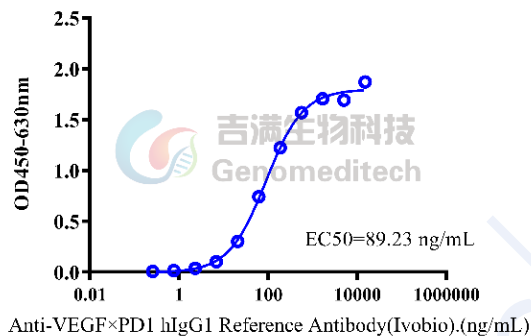


Fig. Assay